

Merlin™
Point-of-Use Drinking Water System



pure
magic



imagination at work



presto!

Conjure up an image of a reverse osmosis system. Now make the permeate storage tank and electric pump disappear. It's no illusion – the wizards at GE have done exactly that with their revolutionary Merlin point-of-use reverse osmosis system. This patented “magic” is the biggest innovation in RO technology in 30 years.

Right before your eyes a steady stream of water flows at a rate of $1/2$ gallons (1.89 lpm)¹ per minute. And that's just a drop in the bucket... this high-production unit is capable of treating more

than 700 gallons per day! That's 50 times the output of typical home RO products, providing commercial water production at the price of a residential system.

- Great tasting, clear drinking water – it's better!
- Better flavor and clarity in tea, coffee, juice
- Fruit, vegetables and other foods rinse clean
- Hard, clear ice cubes
- Better water for making baby formula
- Spot-free rinse water for china and crystal
- Significantly less expensive – and purer – than most bottled water
- No bottles to carry – or throw away

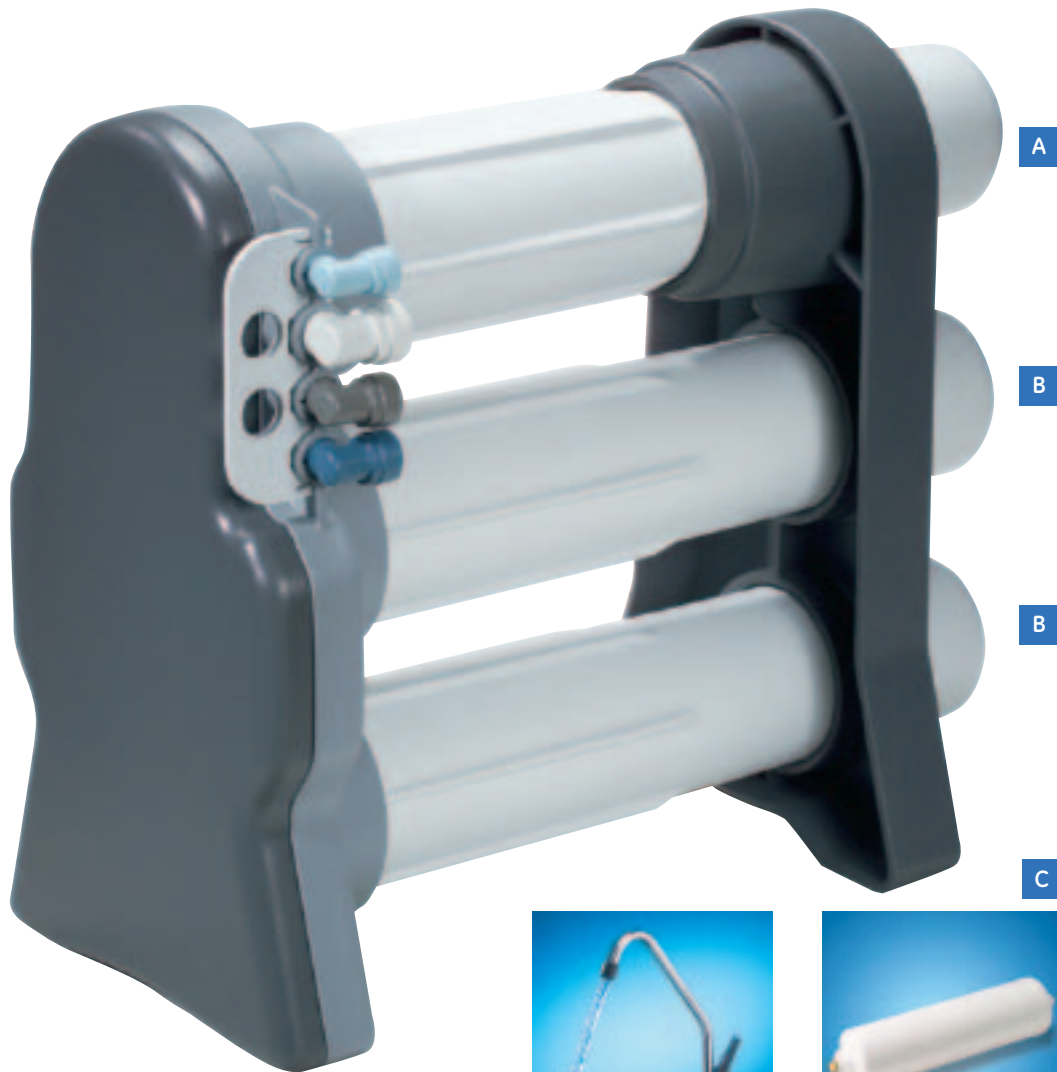


RO technology is the most effective water filtration method.

Tap water passes through a series of filters and membranes to reduce up to 98% of impurities – as small as 1,000th the width of a human hair – such as arsenic², lead, radium, and many others. Merlin's four-stage design uses a carbon pre-filter, two RO membrane elements, and a carbon post-filter to produce the highest quality water.

4-stage design for the best quality water

- A. Carbon prefilter to remove sediment and chlorine.
- B. Two Reverse Osmosis membrane elements for water separation.
- C. Carbon post filter for great taste!



TOUGH STUFF
High-durability Noryl® and polypropylene plastic construction provide years of dependable service.

ALL THE RIGHT CONNECTIONS
Engineered to have less than half the number of connection points – less chance of leaks.

NO TANKS!
No worries about contamination or loss of tank pressure.

NEVER RUNS DRY
Continuous permeate water flows at 1/2 gallon (1.89 liters)¹ per minute.

AT YOUR SERVICE
Custom high-flow faucet (with air gap – where necessary) developed specifically for Merlin.

FITS IN NICELY
Stand-alone compact profile takes up less space than other bulky systems.

IT'S A SNAP
Quick-latch snaps into place and locks down all four tubing connectors in one easy step.



Tested and Certified by the Water Quality Association according to NSF/ANSI standard 58



Continuous flow – no storage tank necessary.



System manufactured by:

GE Infrastructure
Water & Process Technologies
Milwaukee, WI 53209

Made in USA

Contact your local water treatment specialist for more information or to purchase a Merlin drinking water system.

This system has been tested according to NSF/ANSI 58 for reduction of substances listed below:

- Arsenic²
- Barium
- Cadmium
- Chromium (Hexavalent)
- Chromium (Trivalent)
- Copper
- Fluoride
- Lead
- Nitrate
- Nitrite
- Radium 226/228
- Selenium
- TDS

The concentration of the indicated substances in water entering the system was reduced to a concentration less than or equal to the permissible limit for water leaving the system, as specified in the NSF/ANSI 58 standard. For complete results of the WQA testing to the NSF/ANSI 58 Standard, see the Merlin *Performance Data Sheet* P/N 1263717.

Footnotes:

¹ Flow rate at NSF/ANSI 58 test conditions, 50°F, 77psi, 750ppm NaCl.

² Please see "Arsenic Facts" section of the Merlin *Performance Data Sheet* P/N 1263717 for arsenic reduction details.

Caution: Do not use with water that is microbiologically unsafe or of unknown quality without adequate disinfection before or after the system.

In the average residential application, you will need to replace the pre- and post-filter every six months. Replace the membrane elements every 2-3 years.



This product incorporates
Genuine John Guest
Component Parts,
for High Quality and Reliability



©2004, General Electric Company.
Printed in USA, P/N 1264658 Rev. A